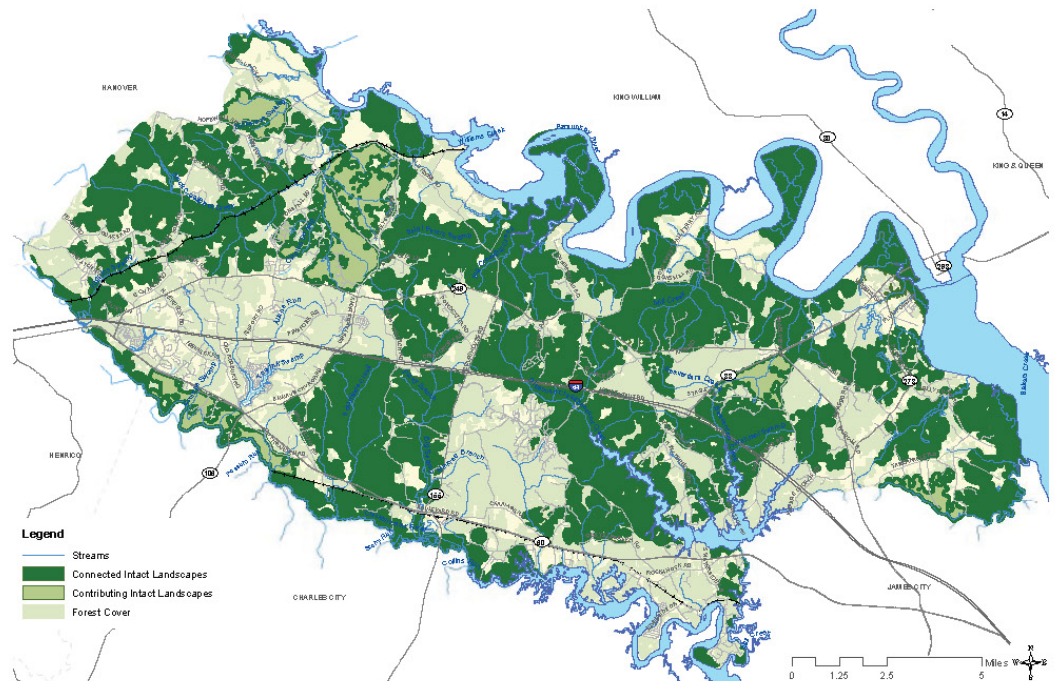


Planning 101 New Kent County

Did you know?

- The importance of the rural character of New Kent County has been a topic of discussion for over a decade.
- The County developed a Green Infrastructure Assessment (2009) that served as a foundation for updating the long-term, Comprehensive Plan (2012).
- The Green Infrastructure Plan identified important environmental areas, cultural sites, and recreational areas.

NEW KENT COUNTY'S GREEN INFRASTRUCTURE ASSETS: *PLANNING FOR THE FUTURE*

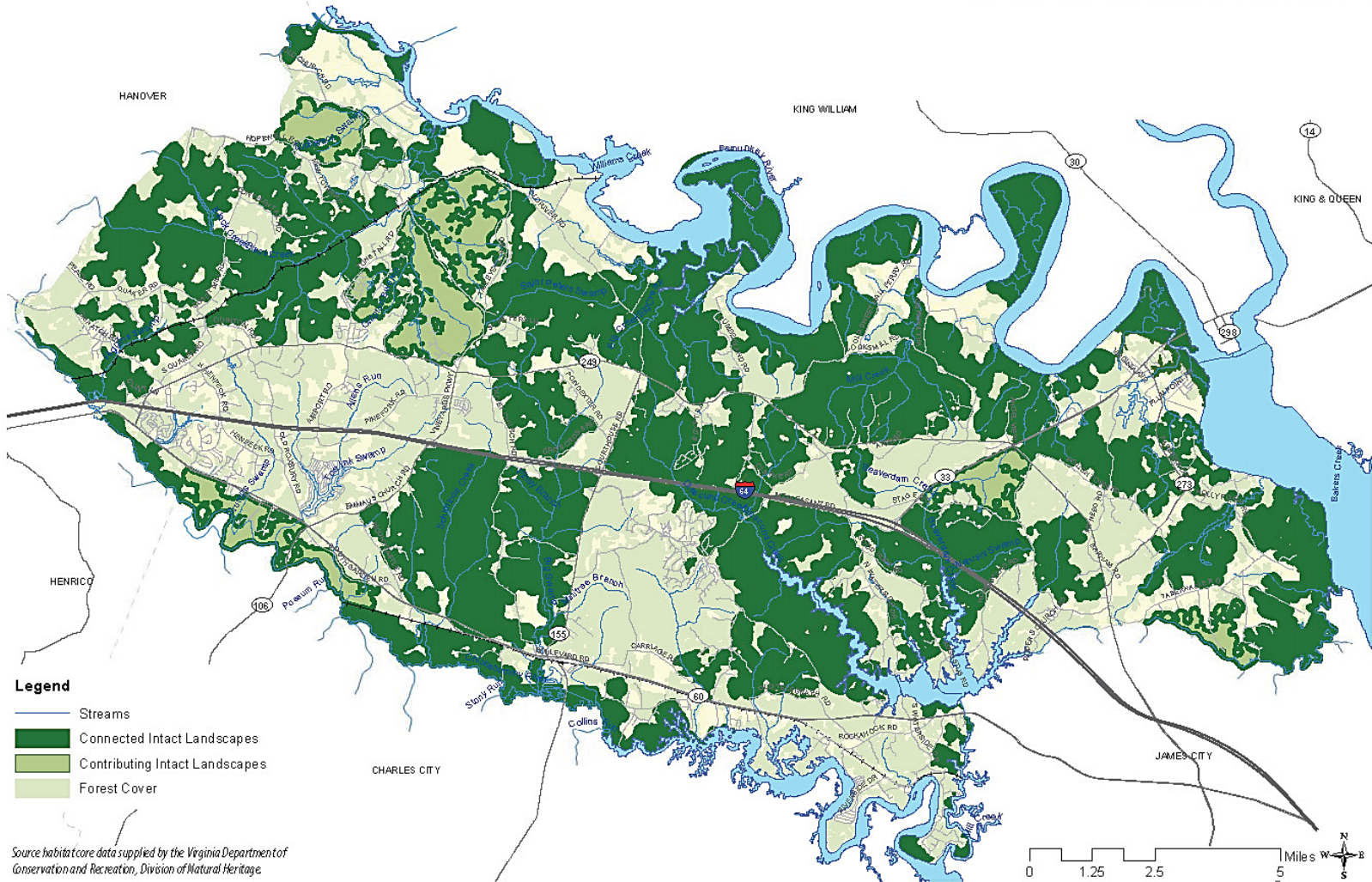


NEW KENT COUNTY GREEN INFRASTRUCTURE PROJECT

July 2009

PLANNING FOR RURAL CHARACTER

MAPPING NEW KENT COUNTY'S ASSETS | 9



Green Infrastructure Network: New Kent County's green infrastructure network consists of the connected, large intact landscapes that have the highest ecological value.

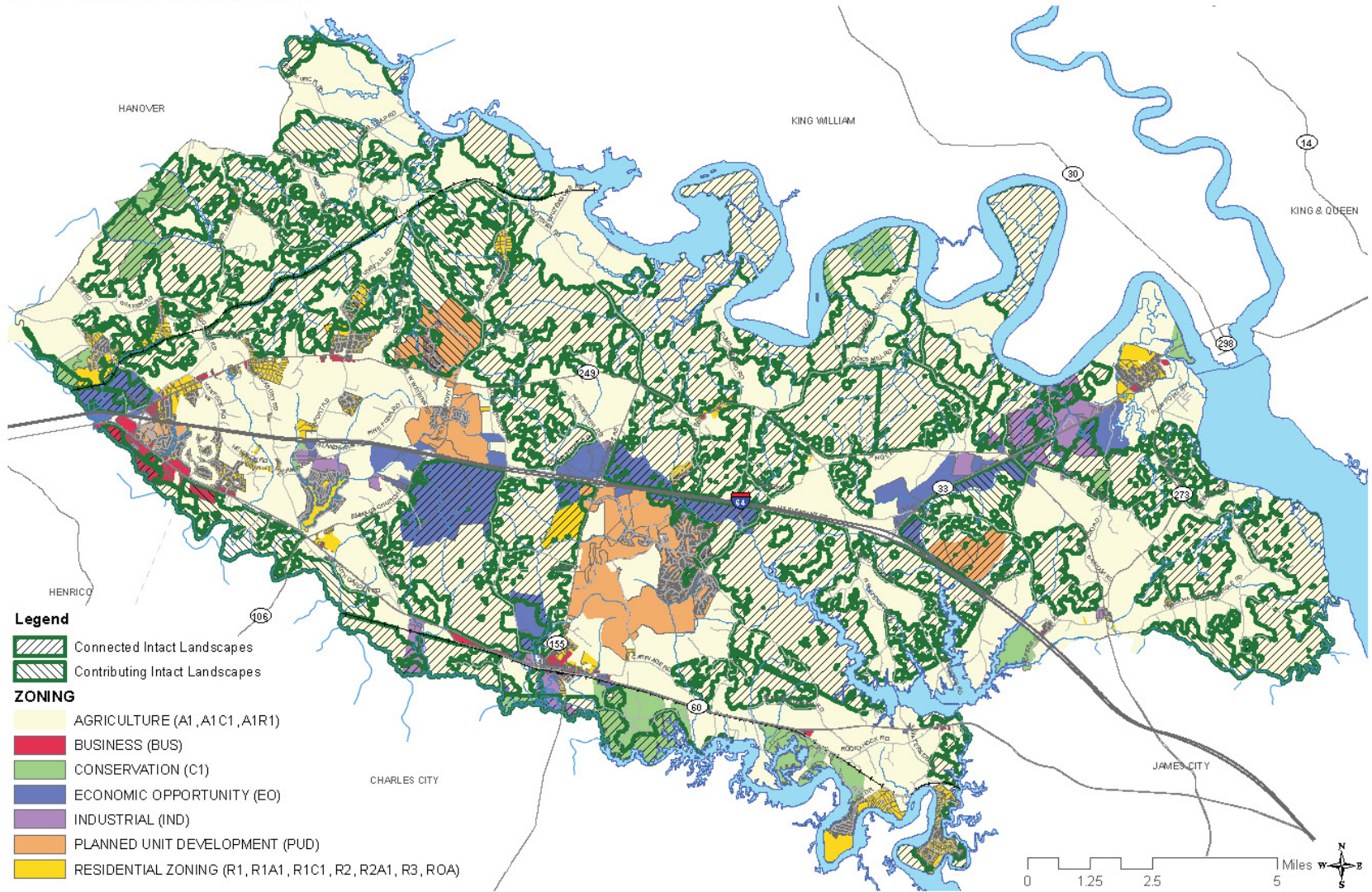
PLANNING FOR RURAL CHARACTER



Heritage and Natural Resource-Based Recreation: Heritage and recreation resources that are closely linked with the county's natural resources.

PLANNING FOR RURAL CHARACTER

20 | PLANNING FOR THE FUTURE



Zoning: This map highlights the relationship between the county's zoning and the high-value assets that make up the county's green infrastructure network.

New Kent County Comprehensive Plan

Adopted October 9, 2012



What is a
Comprehensive
Plan and how is
it used?

Virginia requires each locality to adopt a plan for developing land and facilities within the locality.

"The Comprehensive Plan shall be made with the purpose of guiding and accomplishing a coordinated, adjusted, and harmonious development of the territory which will, in accordance with present and probable future needs and resources, best promote the health, safety, morals, order, convenience, prosperity, and general welfare of the inhabitants..."

Section 15.2-2223
Code of Virginia

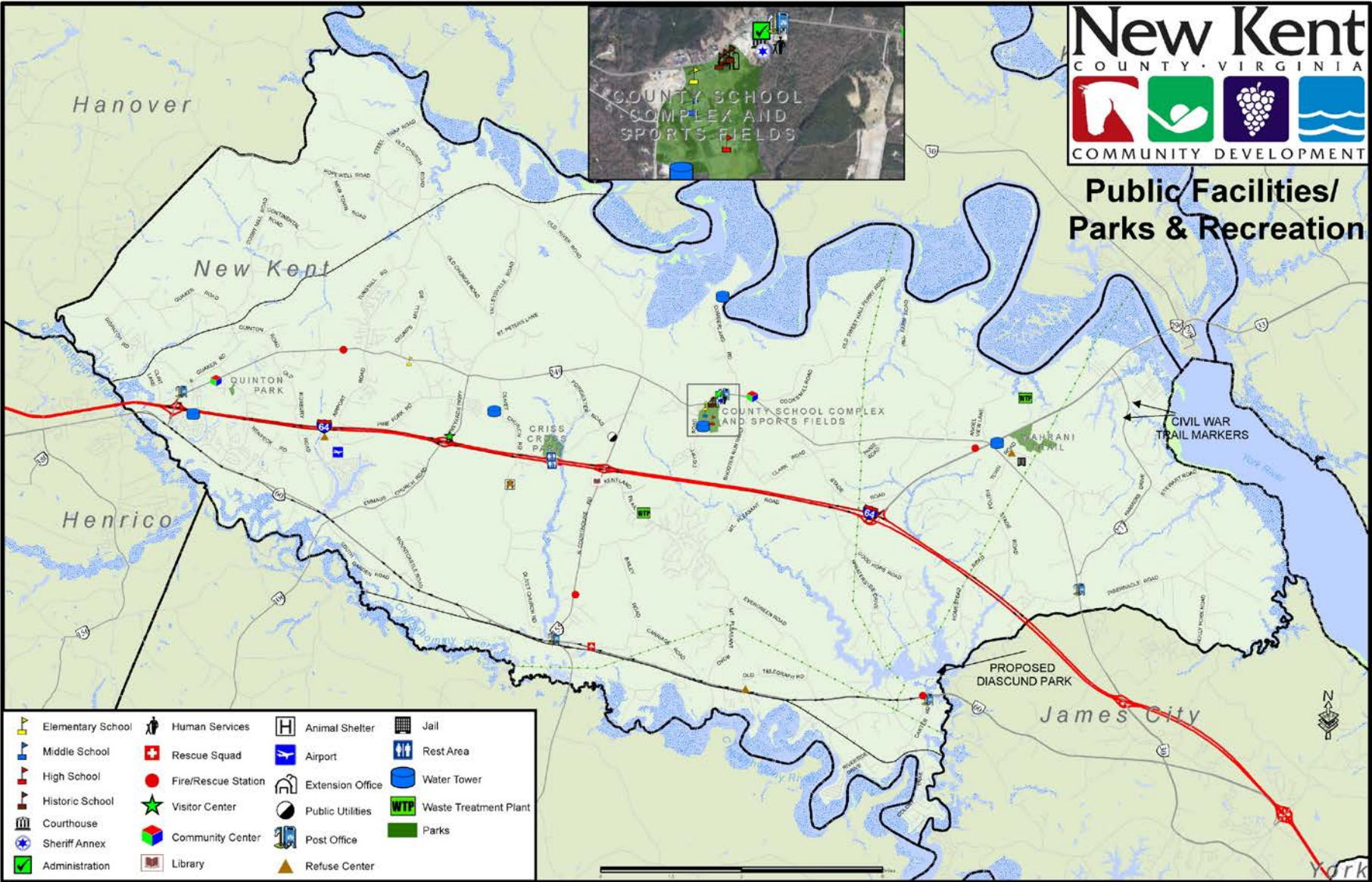
“ The central factor in this Comprehensive Plan is the widely-held desire of the citizens of New Kent County to maintain the County’s attractive, rural character while providing opportunities for the creation of income and wealth in the community. “

New Kent County Comprehensive Plan

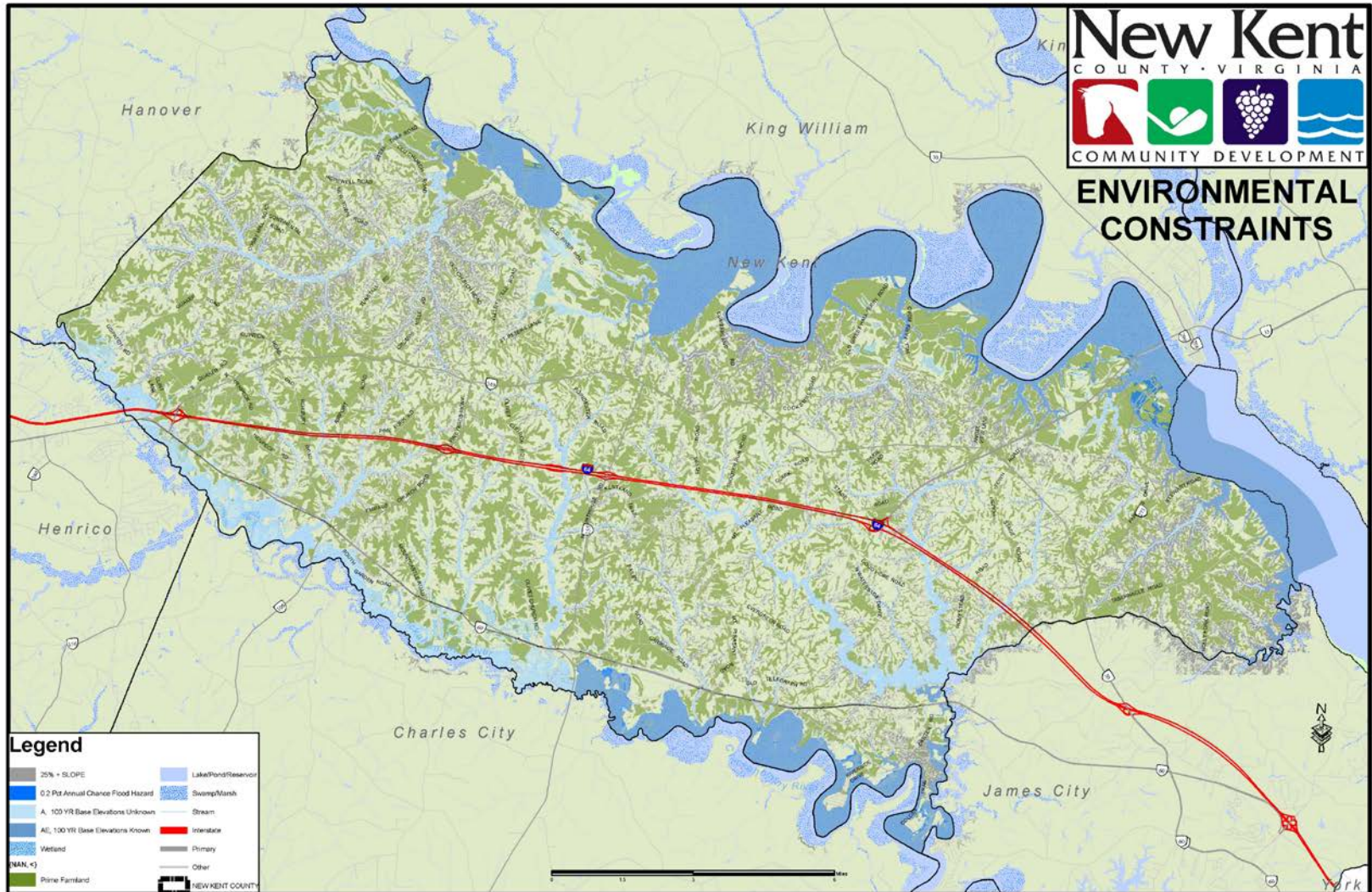
Adopted October 9, 2012



Public Facilities



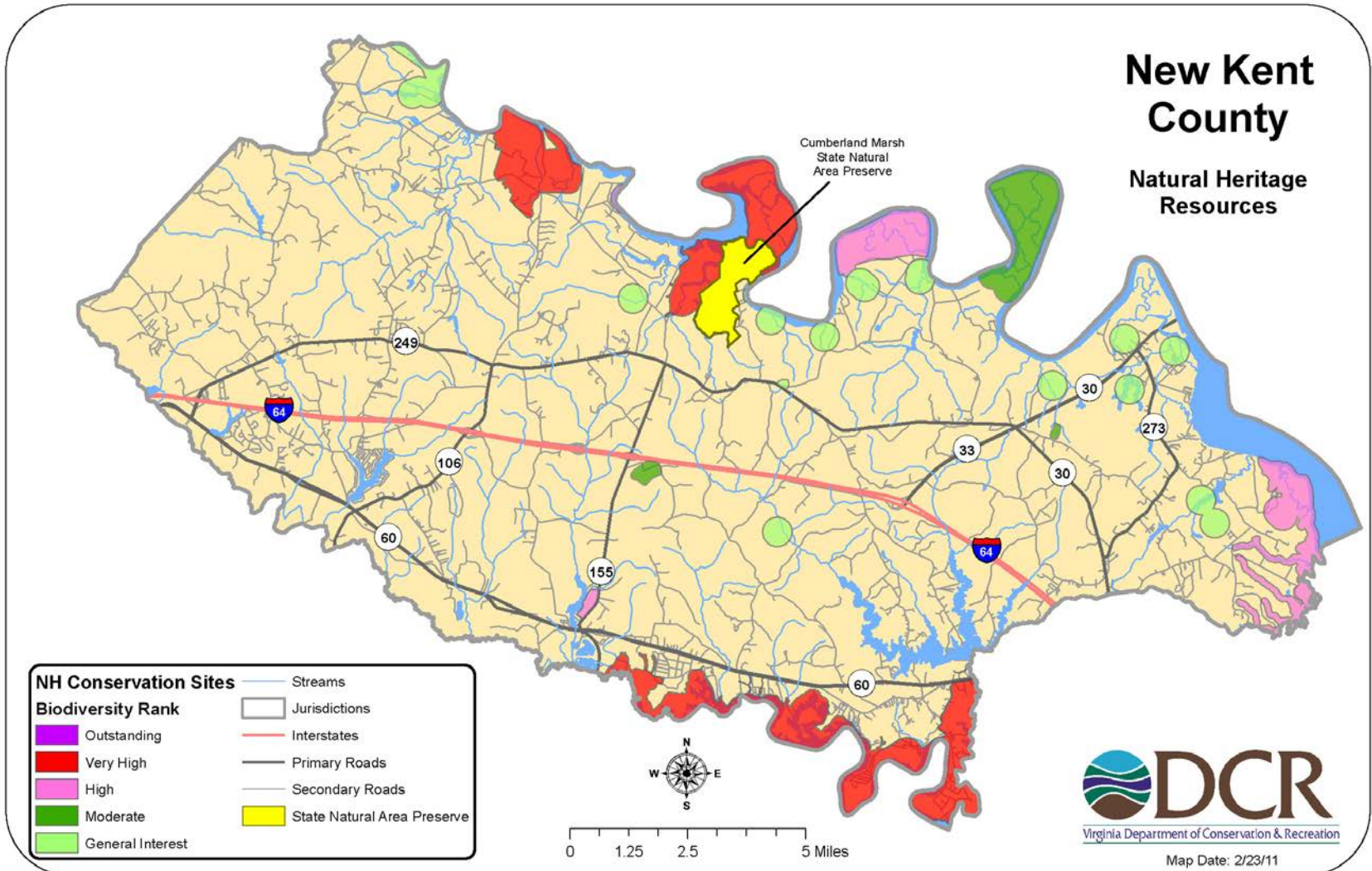
Environmental Constraints



Natural Resource Heritage Areas

New Kent County

Natural Heritage Resources



Description of Future Land Use Types

Villages

- Villages are characterized by a mix of structures and uses, including residential, commercial, and institutional. They are typically compact in size and pedestrian oriented. They have historically functioned as social centers. They are served or intended to be served by public utilities.

Hamlets

- Hamlets are a smaller version of a village. Like a village, they are characterized by a mix of structures and uses, including residential and commercial. They are compact in size. They are not intended to be served by public utilities through the year 2040.

Rural Crossroads

- Rural Crossroads are characterized by a tight cluster of small commercial establishments such as general stores, banks, restaurants, gas stations, convenience stores, etc. They typically occur at intersections and serve a local population.

Suburban Housing

- Single-family, detached dwellings within planned subdivisions that utilize public water or a community water system, and public sewer. They are in proximity to existing County villages.

Description of Future Land Use Types

Conservation

- Land not intended for development, which is set aside for open space, environmental protection, and wildlife habitat.

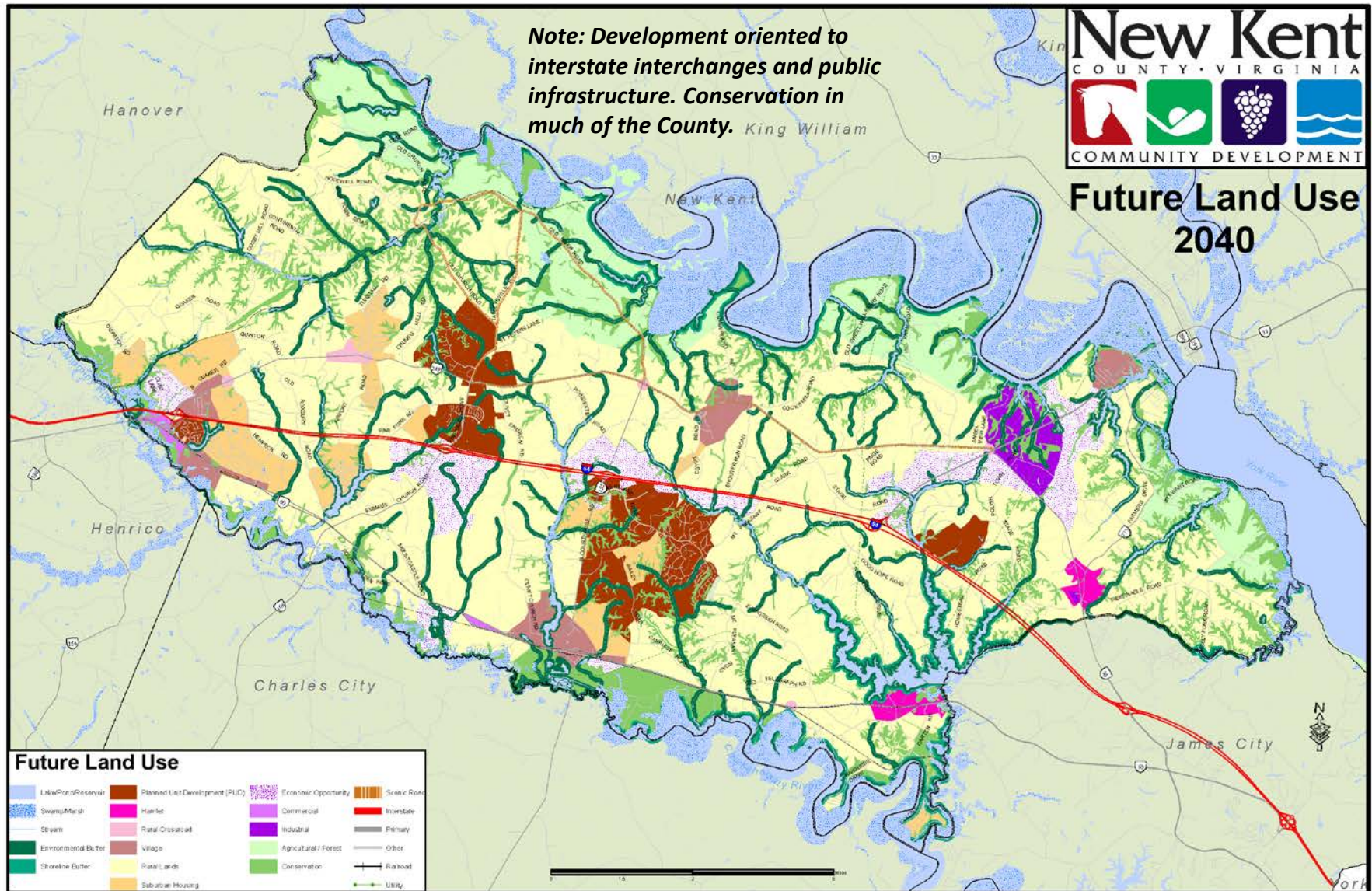
Agriculture and Forestry

- Land whose primary use is the production of food and grain crops, livestock, and timber. It is anticipated that lands designated for Agriculture and Forestry will be protected from development into other land uses through protective zoning.

Rural Lands

- Rural Lands incorporate traditional rural development patterns including agriculture and silviculture. Rural Lands contain historic sites. The intensity of development in Rural Lands is to be kept at low levels. Rural Lands are not intended to be served by public facilities. The designation of Rural Lands is the most extensive designation on the Land Use map, representing the majority of land contained within the County.

Future Land Use Map 2012



What has happened?

- Update the Zoning Regulations to reflect the vision and guidance of the Comprehensive Plan
 - ✓ Established Zoning Ordinance Rewrite Committee (worked for several years)
 - ✓ Cluster subdivision standards revised
 - ✓ Request for Proposal Zoning rewrite 2019 (pending)
- Incorporate Comprehensive Plan into public policies, facilities, and land management decisions
 - ✓ Agricultural and Forestal Districts (10-year protection, benefits in taxation and large tract preservation)
 - ✓ Purchase of Development Rights Program (PDR) est. 2005 - funding challenges
 - ✓ Business and infrastructure directed to areas
 - ✓ Over 1500 building lots for residential are already approved in existing Planned Developments