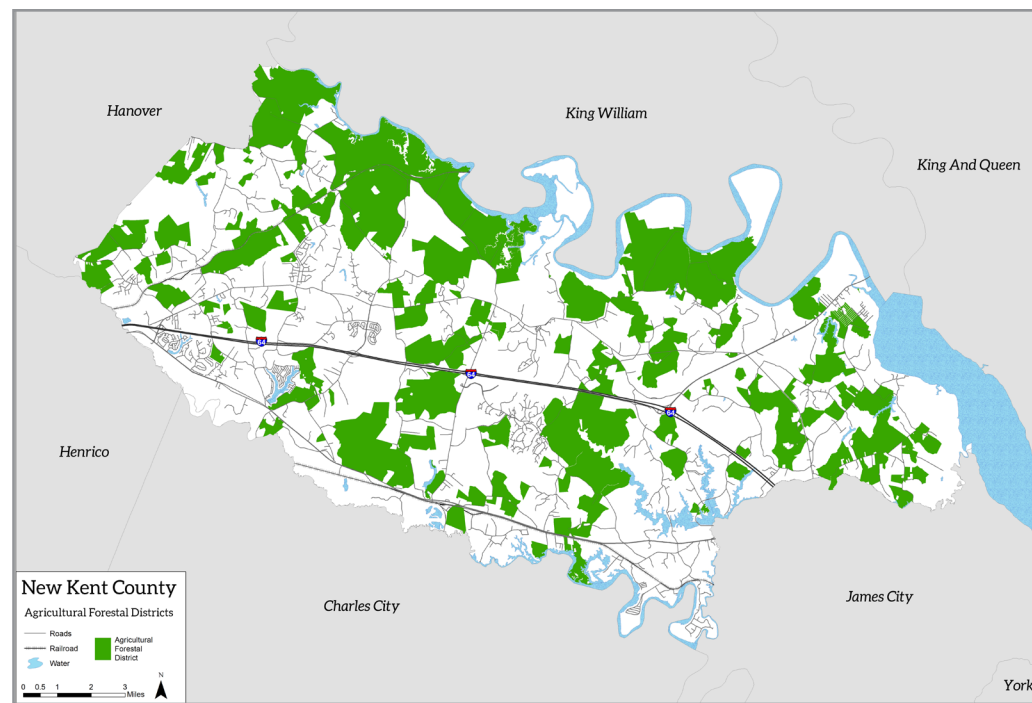


Above: Map of Green Infrastructure Network of New Kent County showing the intact connected natural landscapes of high ecological value. Conservation easements can be used to preserve important landscapes and habitats.



Above: Map of Agricultural and Forestal Districts as of 2020. These areas are part of a voluntary land use program (ten year term) that encourages preservation and conservation of important agricultural and forestal land.

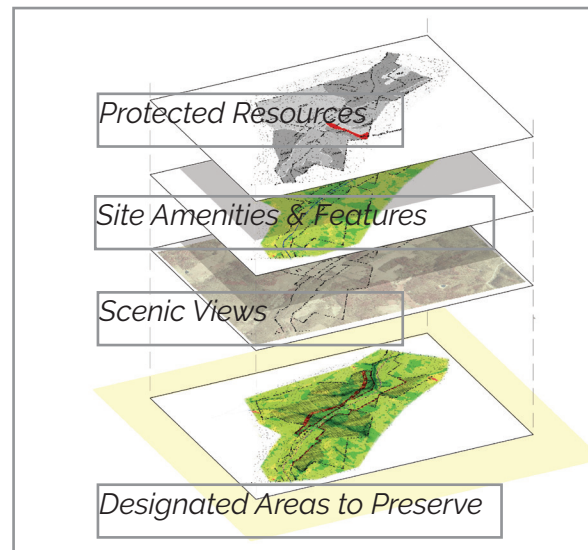
# Countryside

The natural and rural landscapes of New Kent County are significant for their environmental value and their contribution to the cherished quality of life.

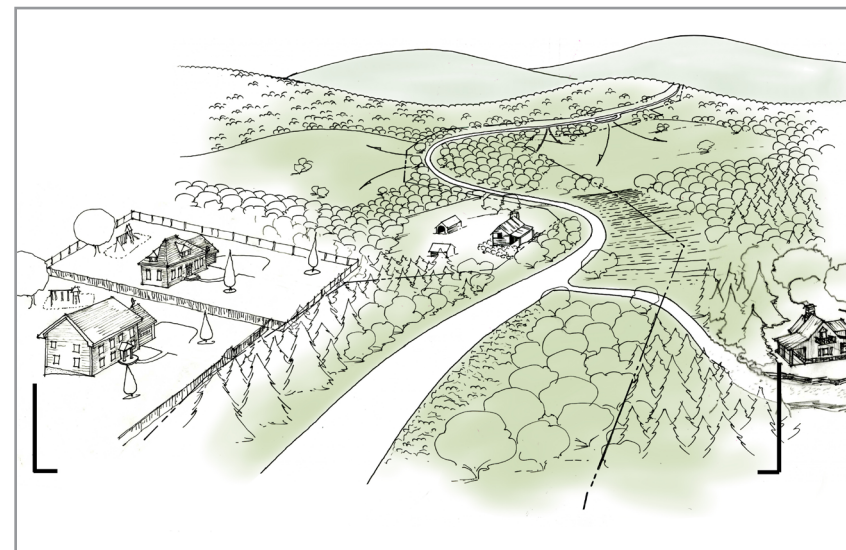
The historic and scenic Pamunkey, York and Chickahominy Rivers and extensive forested and agricultural lands have endured since the County was established in 1652. Careful management of these natural assets are critical to the future of the County.



Above: Example of Conservation Subdivision to preserve landscape and views.



Above: Layer graphic illustrating how to consider features in site development.



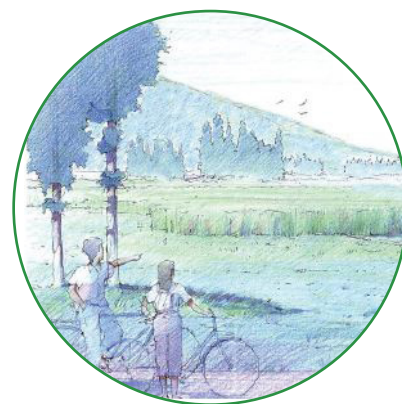
Above: Example frame of rural landscape development pattern showing buildings setback and clustered amid agricultural views.

## Countryside Characteristics

Uses	<ul style="list-style-type: none"> <li>• Agriculture</li> <li>• Forestry</li> <li>• Farms</li> <li>• Single-family residential</li> <li>• Small family or limited conservation subdivisions (planned for rural preservation)</li> <li>• Conservation</li> </ul>
Building Types	<ul style="list-style-type: none"> <li>• Farm buildings</li> <li>• Small residential homes</li> <li>• Agritourism structures</li> <li>• Recreational structures</li> </ul>
Public Spaces	<ul style="list-style-type: none"> <li>• Passive parks</li> <li>• Natural preserves</li> <li>• Scenic roads and corridors</li> <li>• Heritage farms, historic properties</li> <li>• Community identification</li> <li>• Common water access</li> </ul>
Connectivity	<ul style="list-style-type: none"> <li>• Trails</li> <li>• Scenic bike routes</li> <li>• Scenic byways</li> </ul>
Activity	<ul style="list-style-type: none"> <li>• Passive natural activities</li> </ul>



View of fields and farm buildings



Rural landscape Views



Rural residential farm



Road fencing frames views

People admire the countryside because it provides visible contact with nature, history, and an American way of life enjoyed throughout the Nation.