

# Business Park

Signature business parks represent economic opportunities for attracting and growing important business employers.

Early site planning for business parks can provide a strong foundation for incorporating natural features, providing appealing entrance approaches, establishing architectural and site development standards, and ensuring an appropriate business mix.



Design guidelines to coordinate signage, building setbacks, parking, and amenities



Central amenity center for daycare, convenience retail and services

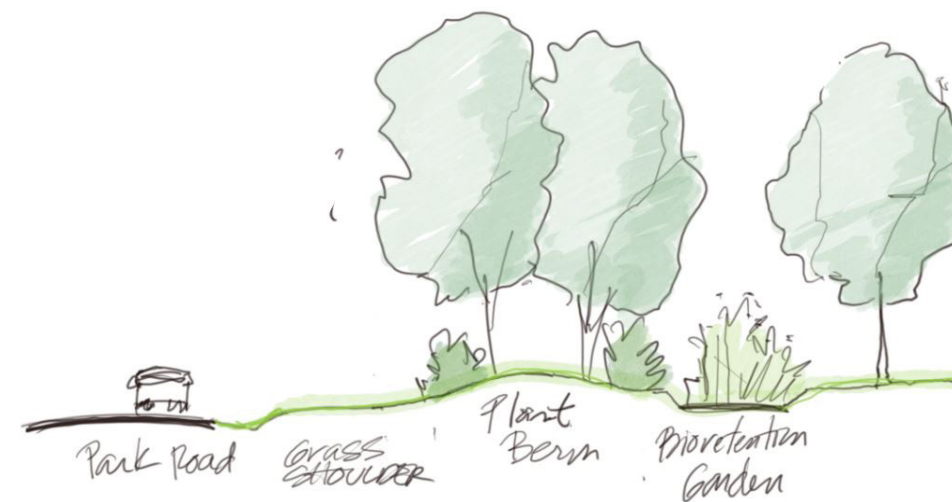


Above: Plan view of Business Park Development parcel showing landscaped corridor entrance road and setback, building sited within the landscape, and parking/service carefully placed to minimize visibility from the public road.



Left: Plan view of a Business Park showing development footprints (for buildings and parking) that are carefully sited in the landscape. Development takes advantage of a green parkway entrance corridor, natural environmental features, and an incorporated trail system.

Below: Visual graphic of what is visible from the road corridor. Green spaces and landscaping provide an appealing approach for businesses and customers. A bio-retention garden can be used as a natural way to manage stormwater runoff from building pads and parking lots.



## Business Park Characteristics

Uses	<ul style="list-style-type: none"> <li>• Corporate business</li> <li>• Clean Industry</li> <li>• Technology</li> <li>• Support businesses, as appropriate</li> </ul>
Building Types	<ul style="list-style-type: none"> <li>• Medium to large industrial forms</li> <li>• Corporate business forms</li> <li>• Buildings sited in landscape</li> <li>• Buildings setback with green frontage</li> <li>• Architectural building standards</li> </ul>
Public Spaces	<ul style="list-style-type: none"> <li>• Landscaped entrance parkway</li> <li>• Natural environmental and recreational features used as amenities</li> <li>• Street trees and landscaping</li> <li>• Parking landscaped and carefully placed away from street views</li> <li>• Coordinated signage and lighting</li> </ul>
Connectivity	<ul style="list-style-type: none"> <li>• Wayfinding directional signage</li> <li>• Safe pedestrian and vehicular circulation</li> <li>• Trail connections to recreational amenities</li> </ul>
Activity	<ul style="list-style-type: none"> <li>• High speed technology communications</li> </ul>